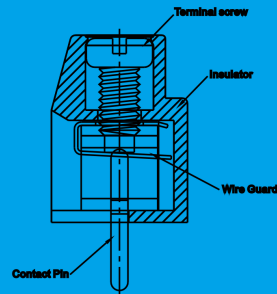
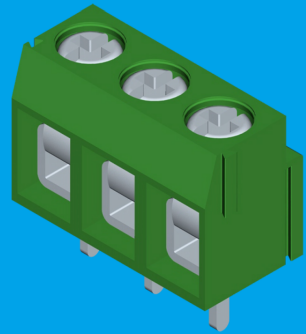


# WELINK

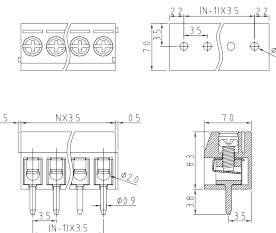
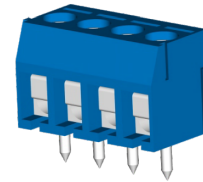


## Wire Protector System

F 1	XX	X	XX	X	X	X	X	X	
Wire Protector System Number	Pitch	Poles	Screw Plating	Metal	Body Type	Color	Mark		
01~99 0A~ZZ	2 2.5 mm B 2.54 mm 3 3.5 mm C 3.81 mm 5 5.0 mm E 5.08 mm 7 7.5 mm G 7.62 mm	02 2 poles 03 3 poles ~ ~ ~ poles 24 24 poles	0 No Requirement 1 *-Screw Plating Cr3+ 2 *-+*Screw Plating Cr3+ 3 *-Screw Plating Ni 4 *-+*Screw Plating Ni 5 *-Brass Screw Plating Cr3+ 6 *-+*Brass Screw Plating Cr3+	0 No Requirement 1 Indit By Order	0 No Requirement 1 Indit By Order	0 No Requirement 1 Brown 2 Red 3 Orange 4 Yellow 5 Green 6 Blue 7 Purple 8 Gray 9 White A Black B-Z Customer Requirements	0 "W"Mark 1 "Welink"Mark 2 NO Mark 3 Customer Requirements		



F13-1-3.5

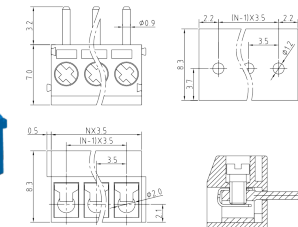
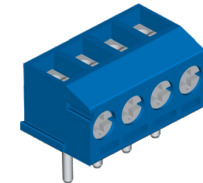


定货号 Number of Order: F1313xx20061  
间距 Pitch: 3.5mm  
位数: Poles: 2P~24P

**规格说明 Specifications**

电气性能 Electrical: UL  
额定电压 Voltage rating: 150V  
额定电流 Current rating: 10A  
适用线径 Solid Wire(AWG): 16-30  
最大锁紧扭力 Torque: 2.0kgf.cm/M2.0  
使用温度范围 Operating temperature: -40℃to+105℃  
耐压值 Withstanding Voltage: 2000VAC

F13-2-3.5

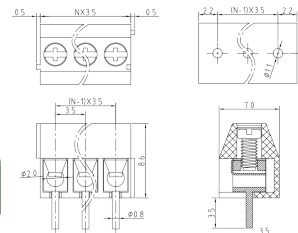
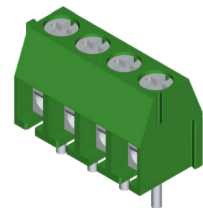


定货号 Number of Order: F1323xx20061  
间距 Pitch: 3.5mm  
位数: Poles: 2P~24P

**规格说明 Specifications**

电气性能 Electrical: UL  
额定电压 Voltage rating: 150V  
额定电流 Current rating: 10A  
适用线径 Solid Wire(AWG): 16-30  
最大锁紧扭力 Torque: 2.0kgf.cm/M2.0  
使用温度范围 Operating temperature: -40℃to+105℃  
耐压值 Withstanding Voltage: 2000VAC

F13-3-3.5

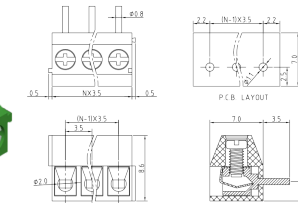
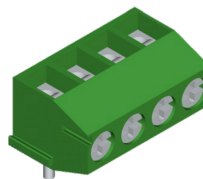


定货号 Number of Order: F1333xx20051  
间距 Pitch: 3.5mm  
位数: Poles: 2P~24P

**规格说明 Specifications**

电气性能 Electrical: UL  
额定电压 Voltage rating: 150V  
额定电流 Current rating: 10A  
适用线径 Solid Wire(AWG): 16-30  
最大锁紧扭力 Torque: 2.0kgf.cm/M2.0  
使用温度范围 Operating temperature: -40℃to+105℃  
耐压值 Withstanding Voltage: 2000VAC

F13-4-3.5



定货号 Number of Order: F1343xx20051  
间距 Pitch: 3.5mm  
位数: Poles: 2P~24P

**规格说明 Specifications**

电气性能 Electrical: UL  
额定电压 Voltage rating: 150V  
额定电流 Current rating: 10A  
适用线径 Solid Wire(AWG): 16-30  
最大锁紧扭力 Torque: 2.0kgf.cm/M2.0  
使用温度范围 Operating temperature: -40℃to+105℃  
耐压值 Withstanding Voltage: 2000VAC